

# Rittal – The System.

Faster – better – everywhere.

## Punched section with mounting flange, 23 x 89 mm, stainless steel for VX – VX 8100.730

Date : Dec 19, 2018

ENCLOSURES

POWER DISTRIBUTION

CLIMATE CONTROL

IT INFRASTRUCTURE

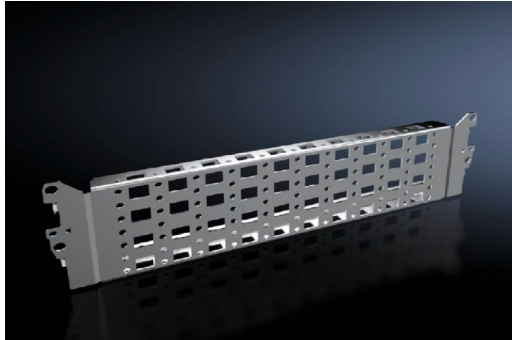
SOFTWARE & SERVICES

FRIEDHELM LOH GROUP



# Punched section with mounting flange, 23 x 89 mm, stainless steel for VX – VX 8100.730

created: 19.12.2018 on [www.rittal.com/com-en](http://www.rittal.com/com-en)



## Product description

<b>Description:</b>	For variable, individual interior installation of the enclosure frame on the inner mounting level.
<b>Benefits:</b>	Simply locate into the system punchings and screw-fasten System punchings on all four sides With slots at the top and bottom for cage nuts, for attaching your own components via metric screws Especially for cable routing in the VX base/plinth, stainless steel and for the installation of busbar supports (non-magnetic stainless steel).
<b>Material:</b>	Stainless steel
<b>Supply includes:</b>	Assembly parts

## Product features

<b>To fit:</b>	Width/depth: 400 mm
<b>Installation options:</b>	On the horizontal and vertical VX enclosure section, on the inner mounting level On the outer mounting level of the enclosure section, running vertically all-round, at the same height Base/plinth system VX, stainless steel, in the width and depth, combined with a base/plinth installation bracket On identical punched sections with mounting flanges
<b>Packs of:</b>	2 pc(s).
<b>Weight/pack:</b>	0.6 kg

<b>EAN:</b>	4028177924628
<b>Customs tariff number:</b>	73269098
<b>ETIM 6.0:</b>	EC002625
<b>ETIM 5.0:</b>	EC002625
<b>eCl@ss 8.0/8.1:</b>	27189234
<b>eCl@ss 7.0/7.1:</b>	27189234
<b>eCl@ss 6.0/6.1:</b>	23159101
<b>eCl@ss 5.1/5.1.4:</b>	27189250
<b>Product description (long):</b>	VX Punched section, with mounting flange 23 x 89 mm, for W/D: 400 mm, stainless steel